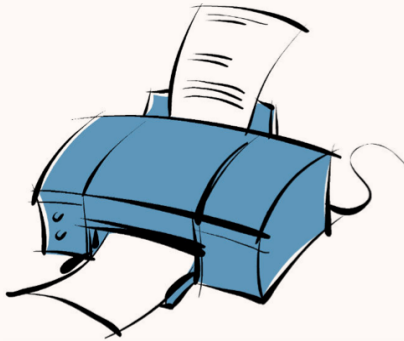


Something you may not know...



“Book Drop”

The 'Book Drop' situated near the library entrance can be used to return books when the library is closed. A receipt will be issued as proof that the book has been returned.



Photocopying and printing facility

The Library provides photocopying and printing facility (black/white and colour) at the Corporate and Staff Training Division, Ground Level, A Block (cash payment)



Online renewal

Online renewal will not be succeeded if:

- Done too early. Item can only be renewed one day before the due date
- The material has been reserved by other users
- The loan period has expired
- Users have fines and charges
- Renewal over 2 times



'Self-Check Machine'

The 'Self-Check Machine' is to facilitate borrowing and renewal by users themselves without having to queue at the Circulation Counter.

Disclaimer

The Newsletter contains information about library and librarian services, research and researchers and its growth. No responsibility or liability is assumed by PSASLib-Link for any injury or damage to persons or property as consequence of the reading, use or interpretation of its published content. Every efforts is made to ensure accuracy and useful for the readers. Information provided in this newsletter is for general guidance and information only. It is the views and opinion of authors and representatives.

Brands under Springer Nature

